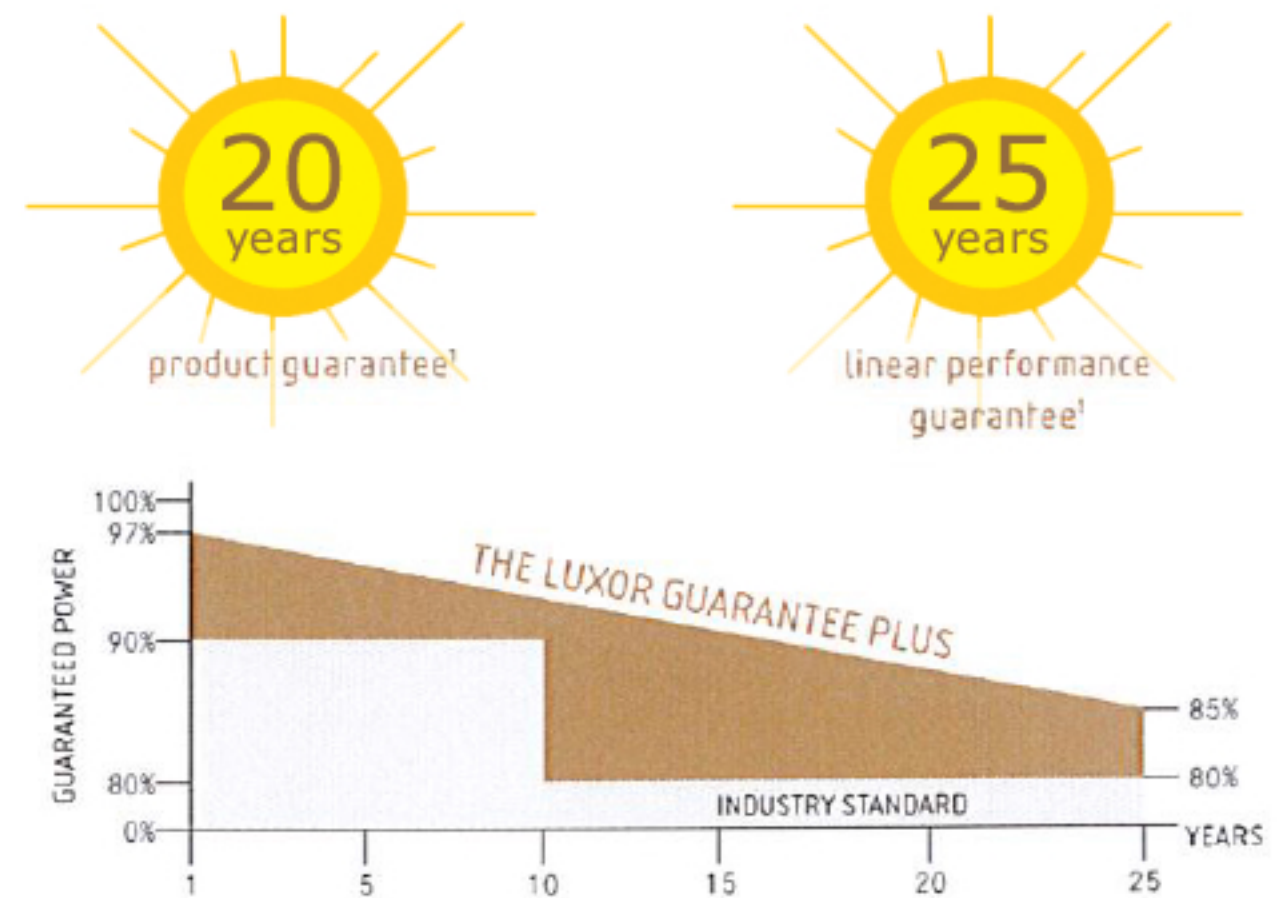


- + REDUCED LOSSES DURING PARTIAL SHADING
- + HIGHER YIELD: MORE REFLECTION ON CELL SURFACE
- + APPLICATIONS: INDUSTRIAL, COMMERCIAL AND RESIDENTIAL POWER PLANTS
- + ECO: ESPECIALLY ECONOMIC AND RELIABLE



ECO LINE HALF CELL

M120 / 345 - 365 W

MONOCRYSTALLINE MODULE FAMILY, FULL BLACK



Longlife tested



Power proofed



Safety provided



Selection of components



Cross-linking degree test



Performance surplus of 0 Wp to 6.49 Wp



100% PID free cells



Special packing to avoid micro cracks in the cells



German warrantor

ECO LINE HALF CELL M120 / 345 - 365 W

Monocrystalline module family

Module type LX - XXXM/166-120+ | XXX = Rated power P_{mpp}

Electrical data at STC

	345.00	350.00	355.00	360.00	365.00
Rated power P _{mpp} [Wp]	345.00	350.00	355.00	360.00	365.00
P _{mpp} range to	351.49	356.49	361.49	366.49	371.49
Rated current I _{mpp} [A]	10.38	10.46	10.54	10.62	10.69
Rated voltage V _{mpp} [V]	33.27	33.49	33.72	33.94	34.17
Short-circuit current I _{sc} [A]	10.96	11.05	11.13	11.21	11.29
Open-circuit voltage U _{oc} [V]	39.61	39.87	40.14	40.41	40.68
Efficiency at STC up to	19.29%	19.57%	19.84%	20.12%	20.39%
Efficiency at 200 W/m ²	18.73%	19.00%	19.28%	19.55%	19.81%

Electrical data at NOCT

	255.91	259.96	264.06	268.21	272.15
Power at P _{mpp} [Wp]	255.91	259.96	264.06	268.21	272.15
Rated current I _{mpp} [A]	8.30	8.37	8.44	8.52	8.58
Rated voltage V _{mpp} [V]	30.84	31.07	31.28	31.49	31.70
Short-circuit current I _{sc} [A]	8.85	8.92	8.99	9.06	9.12
Open-circuit voltage U _{oc} [V]	36.56	36.82	37.07	37.34	37.60

Specification as per STC (Standard test conditions): irradiance 1000 W/m² | module temperature 25°C | Air Mass = 1.5
 NOCT (nominal operating cell temperature): irradiance 800 W/m² | wind speed 1 m/sec | ambient temperature 20°C | cell operating temperature 45 +/- 2°C | Air Mass = 1.5

Limiting values

Max. system voltage [V]	1000 V or 1500 V
Max. return current [I]	20 A
Operating Temperature	-40 to 85°C
Safety class	II
Max. tested pressure load [Pa] ²	5400
Max. tested tensile load [Pa] ²	2400

Temperature coefficient

Temperature coefficient [V] [I] [P]	-0.285% /°C 0.049% /°C -0.360% /°C
---	--

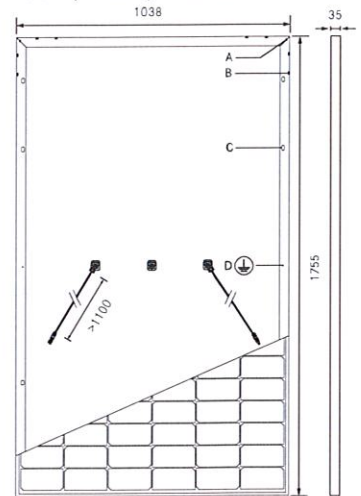
Specifications

Number of cells (matrix)	120 (6 x 20) 166 mm x 83 mm
Module dimensions (LxWxH) ³ Weight	1755 mm x 1038 mm x 35 mm 20 kg
Front-side glass	3.2 mm tempered highly transparent, anti-reflection solar glass
Frame	stable, anodised aluminium frame
Junction Box	At least IP67
Cable	symmetrical cable lengths > 1.1 m and 1.1 m, 4 mm ² solar cable
Diodes	3 Schottky Diodes
Plug-in connection	MC4 or equivalent (IP67)
Hail test (max. hailstorm)	∅ 45 mm impact velocity 23 m/s ± 83 km/h

The specifications and average values can vary slightly. Relevant is the corresponding data of the individual measurement. Specifications are subject to change without notice. Measurement tolerance depending on equipment: rated power +/- 3%, other values +/- 10%. All information given in this data sheet corresponds to DIN EN 50380. A potential light-induced degradation of the power after commissioning is not considered here. Further information in the installation manuals.

- The specific warranty conditions are given under www.luxor-solar.com/downloads.html
- Horizontal mounted
- Tolerance L/W = +/- 3 mm. H +/- 2mm, the dimensions given in the order confirmation will be decisive
- Location and dimensions of holes on request

Back - / Front -/ Side view³

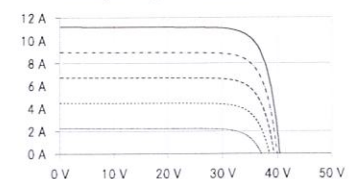


Drilled holes⁴

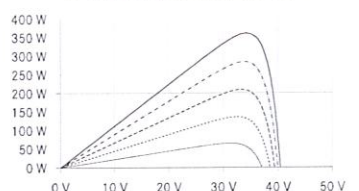
- A: 4 x drainage
- B: 16 x ventilation
- C: 8 x mounting
- D: 2 x earthing

Electrical characteristics

UI-diagram e.g. LX-350M/166-120+



UP-diagram e.g. LX-350M/166-120+



- 200 W/m²
- 400 W/m²
- 600 W/m²
- 800 W/m²
- 1000 W/m²

Luxor, your specialised company

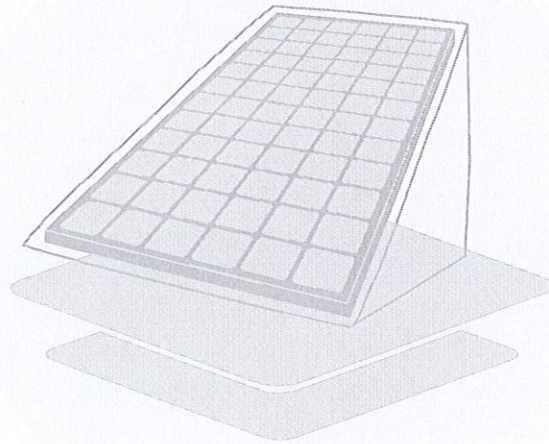


IEC
IEC 61215
IEC 61730



Guidelines:
93/68/EEC
2014/35/EU, (LVD)
2014/30/EU, (EMC)

The validity of the certificates/listings for a specific country has to be examined under:
www.luxor-solar.com/downloads.html



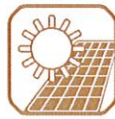
LUXOR SOLAR PREMIUM PARTNER 2021



25-year
performance
guarantee



Longlife
tested



Power
proofed



Safety
provided



Conforms to
EU directives



Certified
performance
security



TÜV tested

Every Luxor photovoltaic module from the Eco Line comes with a product guarantee of 15 years as standard. Our modules are carefully manufactured and subjected to the strictest internal quality controls. At the same time, this quality is regularly confirmed by independent testing institutes.

In addition our premium partners are carefully selected, based on the following criteria: + expertise + know-how + component selection + planning competence + quality standards in the installation + customer support and aftersales.

For all Luxor Solar modules distributed by our qualified premium partner Ecotal



a 15 + 5 year = 20-year product guarantee is therefore granted.

Volker Leh | CEO